

MONASH
University

ACCIDENT
RESEARCH
CENTRE




A Review of the
Characteristics of
Prehospital Response
to Terrorism

Matt Pepper

V1.0 May 2019

Generic Disclosure Slide

- No financial disclosure



Affiliations

Australian Tactical Medical Association
New South Wales Ambulance – Special Operations/Tactical Paramedic Team
Journal of High Threat and Austere Medicine
Central Queensland University – Tactical Medicine
Monash University Accident Research Centre – MPhil

www.atma.net.au

Overview:

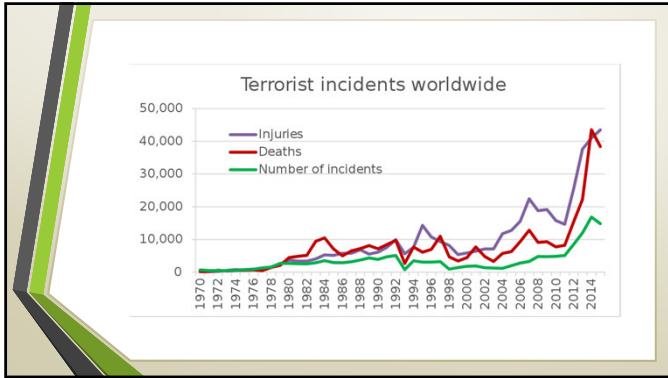
- Systematic Literature Review
- Results
- Identified Themes
- Future Directions

Initial research question:

- What are the characteristics of the prehospital response to terror attacks in the post 2011 era?
- Focus is on the following factors outlined in *Utstein-style template for uniform data reporting of acute medical response in disasters*:
 - On-scene initial actions including the assessment of the preliminary health effects
 - On-scene medical control and coordination including the development of a medical action plan
 - System-level medical coordination
 - Medical communication and information management
 - Medical resource management

Secondary research questions:

- What are common themes in the description and analysis of prehospital response to terrorism?
- What are innovative approaches that can be identified to refine the future response to terror attacks?
- What are 'lines of action' to address identified themes in the response to complex, coordinated terrorist attacks?



Terrorism Definition

- *The intentional use of violence — real or threatened — against one or more non-combatants and/or those services essential for or protective of their health, resulting in adverse health effects in those immediately affected and their community, ranging from a loss of well-being or security to injury, illness, or death.*

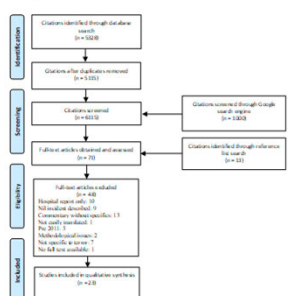
Terrorism Definition: Lit Review

- *The incident must be intentional—the result of a conscious calculation on the part of a perpetrator.*
- *The incident must entail some level of violence (including violence against property) or the threat of violence.*
- *There must be sub-national perpetrators.*

Terrorism Definition: Lit Review

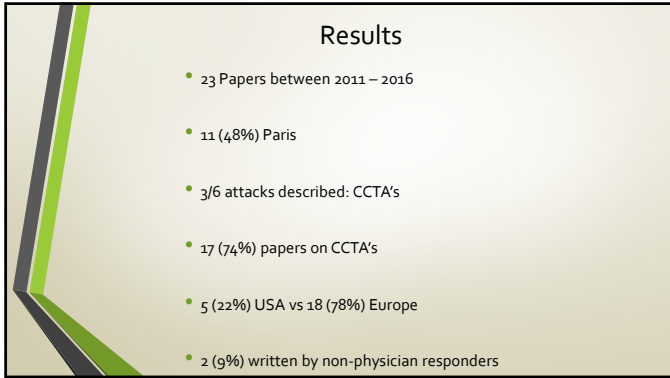
- The act must be aimed at attaining a political, economic, religious, or social goal.
- There must be evidence of an intention to coerce, intimidate, or convey some other message to a larger audience (or audiences) than the immediate victims.
- The action must be outside the context of legitimate warfare activities.

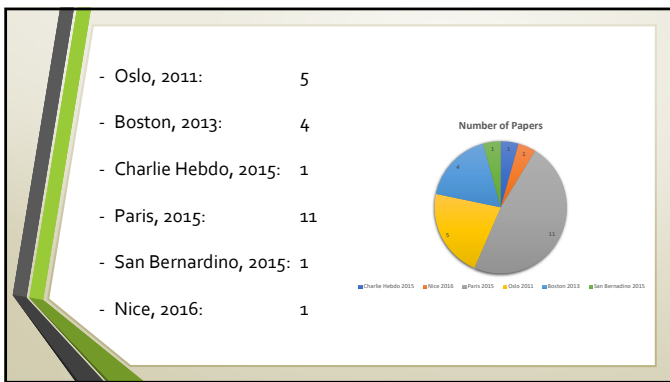
PRISMA 2009 Flow Diagram

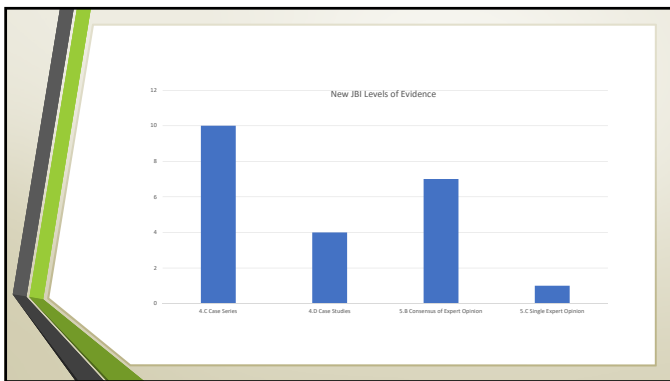


Utstein-Style Template for Uniform Data Reporting of Acute Medical Response in Disasters

1. Event Notification	5. Onsite Medical Care	9. Deactivation of DMMP
2. Activation of Disaster Medical Management Plan (DMMP)	6. Scene Casualty Clearance	10. Continuity of Care
3. Disaster Med Ops Coordination	7. Distribution of Survivors	11. Mortality
4. Onsite Triage	8. Responder Health & Safety	12. Injuries & Injury Profile







Summary

- Low quality and availability
- Physician led
- Focus on higher end of complexity
- Descriptive
- Govt/Institutional AAR's

Identified Themes:

- Communication
- Systematic activation
- Triage
- Tactical casualty care










Prehospital Response to Terrorism:
Research Directions



Questions?

matt@atma.net.au
